

Motor Run Capacitors

MKP 440 SERIES PLASTIC CASE 440 V AC



APPLICATION

These metallised polypropylene capacitors are particularly suited for AC voltages.

They are designed for permanent connection in the auxiliary windings of single phase induction motors.

They are also suitable for use with star connected three phase motors operating on a single phase supply.

Typical conditions for this range of capacitors include domestic appliances, pumps and office machinery.


DESCRIPTION

A range of metallised polypropylene film capacitors, with excellent self healing properties.

This case is produced from self - extinguishing plastic and encapsulated in a polyurethane flame retardant resin with the option of a stud for base mounting.

Terminations are a deck with a 6.3mm double amp tag.

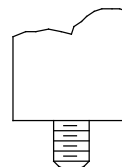
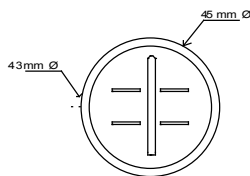
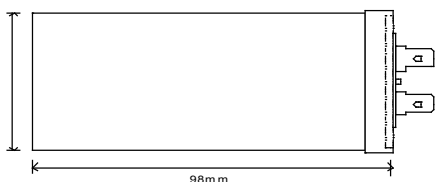
SPECIFICATION

Nominal Operating Voltage	440 V AC 50/60Hz	Refer overleaf for the standard series 440 range plus information and dimensions. 
Capacitance Range	1 - 135µF	
Capacitance Tolerance	± 5% / ± 10°C	
Operating temperature range	-25°C to +85°C	
Climate Category	25/85/21	
Dissipation Factor (tanδ)	<0.0015 typical at 1kHz	
Test Voltages Between Terminals	1.5 x Working Voltage	
Approvals	BS,EN, ISO 9001 - 2000	

440 Series

Standard Range and Dimensions

Capacitance μf	Case Size (dia x length) mm
1--3	30 x 56
3.1 - 5	30 x 75
5.1 - 9	35 x 75
9.1 - 12	35 x 98
12.1 - 16	40 x 98
16.1 - 22	45 x 98
22.1 - 30	50 x 98
30.1 - 50	63.5 x 98
50.1 - 70	63.5 x 123
70.1 - 95	76 x 123



A STUDDED VERSION IS AVAILABLE ON REQUEST

CASE DIAMETER: 30MM - 50MM M8 X 12 STUD
CASE DIAMETER: 50.8MM - 76MM M12 X 16 STUD