



## Motor Run Capacitors

### MKP 140 SERIES ALUMINIUM CAN 250 V AC

#### APPLICATION

These metallised polypropylene capacitors are particularly suited for AC voltages.

They are designed for permanent connection in the auxiliary windings of single phase induction motors.

They are also suitable for use with star connected three phase motors operating on a single phase supply.

Typical conditions for this range of capacitors include domestic appliances, pumps and office machinery.


#### DESCRIPTION

A range of metallised polypropylene film capacitors, with excellent self healing properties.

This can is produced from aluminium and encapsulated in a polyurethane flame retardant resin with the option of a stud for base mounting.

Terminations are twin mains cable, sheathed.

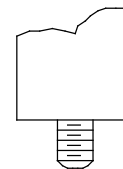
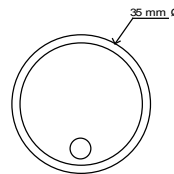
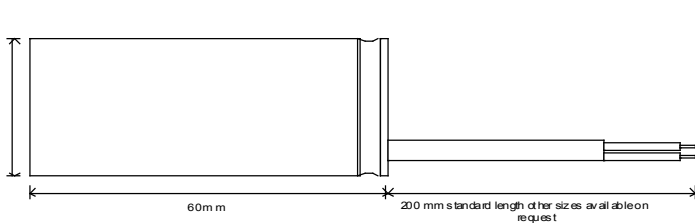
#### SPECIFICATION

Nominal Operating Voltage	250 V AC 50/60Hz	Refer overleaf for the standard series 140 range plus information and dimensions.  
Capacitance Range	1 - 180µF	
Capacitance Tolerance	± 5% / ± 10°C	
Operating temperature range	-25°C to +85°C	
Climate Category	25/85/21	
Dissipation Factor (tanδ)	<0.0015 typical at 1kHz	
Test Voltages Between Terminals	1.5 x Working Voltage	
Termination to can	2000 V AC	
Approvals	BS,EN, ISO 9001 - 2000	

# 140 Series

## Standard Range and Dimensions

Capacitance $\mu\text{f}$	Case Size (dia x length) mm
1 -- 10	35 x 60
10.1 - 15	35 x 73
15.1 - 22	35 x 98
22.1 - 30	40 x 98
30.1 - 40	45 x 98
40.1 - 50	50.8 x 98
50.1 - 90	63.5 x 98
90.1 - 135	63.5 x 123
135.1 - 180	76 x 123



A STUDDED VERSION IS AVAILABLE ON REQUEST

CAN DIAMETER. 30MM - 50MM M8 X 12 STUD  
 CAN DIAMETER. 50.8MM - 76MM M12 X 16 STUD