

MFC SERIES

Designed for use in a wide range of applications, the MFC series of common mode filters offer a general purpose, low cost solution to mains borne interference.

Applications:

- General Industrial Applications
- Computer Systems
- Alarm Systems

Termination Options:

- 6.3 x 0.8 Faston Terminals
- Stud Terminals
- Flying Leads (130mm length)

Case Material:

- All deep drawn steel (0.5mm nom. thickness)
- A bright nickel plate finish

NB. Other lead lengths available upon request

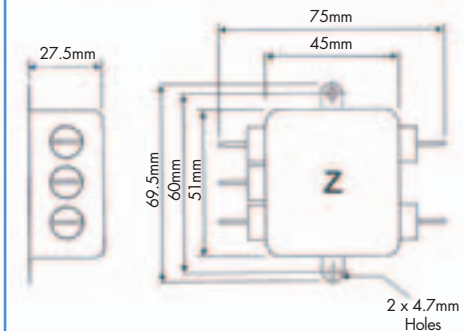
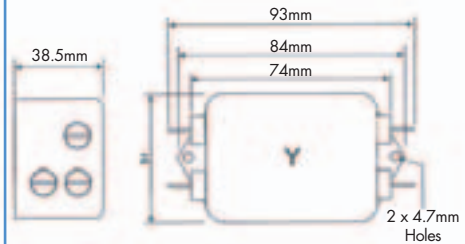
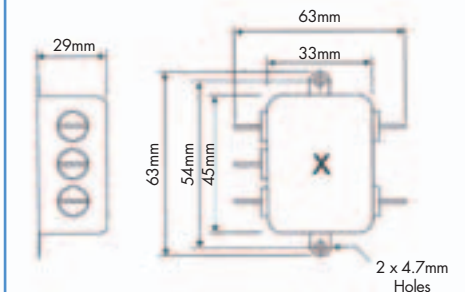
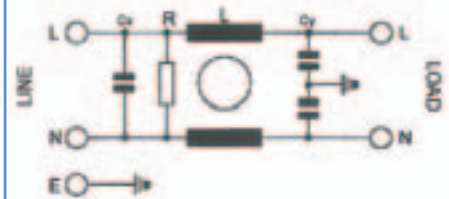


Characteristics	
Current Ratings	1, 3, 6, 10 and 15 amps
Voltage Range	110/250 VAC MAX. 50/60Hz
Current Overload	6 x rated current for 8 secs
Earth Leakage Current	<2 x 0.63mA 250V 50Hz
High Potential Testing	(1min)
Line to Ground	2250Vdc
Line to Line	1500Vdc
Temperature	-25°C to +40°C

Part No.	Amp	Case Style	Terminations Available
MFC/1	1	X	Fastons or Flying Leads
MFC/3	3	X	Fastons or Flying Leads
MFC/6	6	X	Fastons or Flying Leads
MFC/10	10	Z	M4 Studs or Flying Leads
MFC/15	15	Y	M4 Studs or Flying Leads

Typical Insertion Loss - dB (50 Ohm Circuit)
Frequency - MHz

Part No.	Nom. Current	Mode	.15	.50	1.0	5.0	10	20	30
MFC/1	1A	Common	20	35	45	55	55	55	50
MFC/3	3A	Common	20	35	45	55	55	55	50
MFC/6	6A	Common	10	22	30	50	50	55	45
MFC/10	10A	Common	10	22	30	50	50	50	45
MFC/15	15A	Common	10	22	30	45	50	50	45



All dimensions in mm